

The diagram above is just for reference. Please take the appearance of the actual product as the standard.

PIPELINE WATER DISPENSER

# Instruction Manual

Model: JL1844S-G

Before installing and operating your water purifier, please read the instruction manual carefully and keep it for future reference.

## 1. Safety

To reduce risk of injury and property damage, user must read this entire guide before assembling, installing and operating the dispenser.

Failure to execute the instructions in this manual can cause personal injury or property damage. This product dispenses water at very high temperatures. Failure to use this properly can cause personal injury.

When operating this dispenser, always exercise basic safety precautions, including the following: Prior to use, this dispenser must be properly assembled and installed in accordance with this manual.

This dispenser is intended for water dispensing only. Do NOT use other liquids. Do NOT use for other purposes. Never use any other liquid in the dispenser other than known microbiologically safe tap water.

For indoor use only. Keep water dispenser in a dry place away from direct sunlight. Do NOT use outdoors.

Install and use only on a hard, flat and level surface.

Do NOT place dispenser in an enclosed space or cabinet.

Do NOT operate the dispenser in the presence of explosive fumes.

Position back of dispenser no closer than 20 cm from wall and permit free airflow between wall and dispenser. There must be at least 20 cm clearance on the sides of the dispenser to permit airflow.

Use only properly grounded outlets.

Do not use an extension cord with your water dispenser.

Always grasp plug and pull straight out from outlet. Never unplug by pulling on power cord.

To protect against electric shock, do NOT immerse cord, plug or any other part of the dispenser in water or other liquid.

Ensure dispenser is unplugged prior to cleaning.

Never allow children to dispense hot water without proper and direct supervision. Unplug unit to prevent unsupervised use by children.

Service should be performed only by a certified technician.

Warning: Do not damage the refrigerant circuit.

This appliance can be used by my children aged from 8 years and above if they have been given supervision or instruction concerning use of the appliance in a safe way and if they understand the hazards involved. Cleaning and user maintenance shall not be made by children unless they are older than 8 and supervised. Keep the appliance and its cord out of reach of children less than 8 years.

Appliances can be used by persons with reduced physical, sensory or mental capabilities or lack of experience and knowledge if they have been given supervision or instruction concerning use of the appliance in a safe way and understand the hazards involved. Children shall not play with the appliance.

This appliance is intended to be used in a household and similar applications such as: kitchen area in shops, offices and other working environments, bed and breakfast type environments, catering and similar non-retail applications.

Do not store explosive substances such as aerosol cans with flammable propellant in this appliance. If the supply cord is damaged, it must be replaced by a special cord assembly available from the manufacturer or its service agent.

The appliance must not be immersed.

Never turn the machine upside down or lean it more than 45°.

Thermostat has been adjusted. There is no need to adjust it by yourself. When the matching is below the freezing point and blocked by ice, the cooling switch should be turned off for 4 hours before turning it on again to continue its operation.

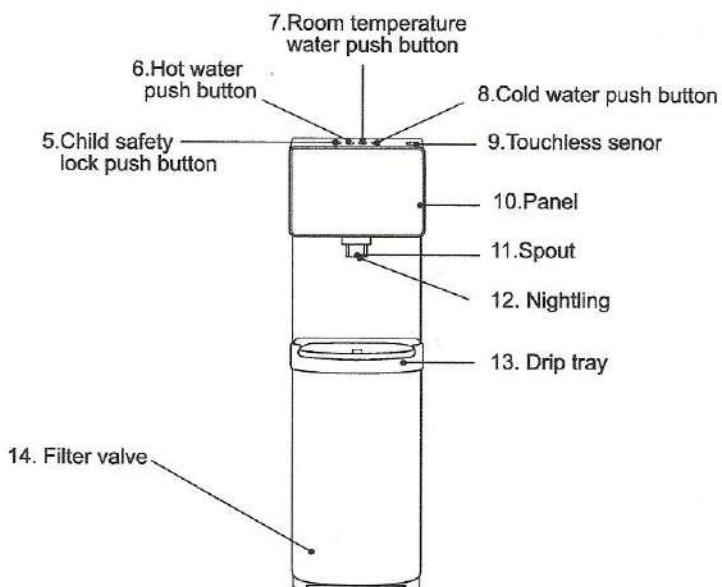
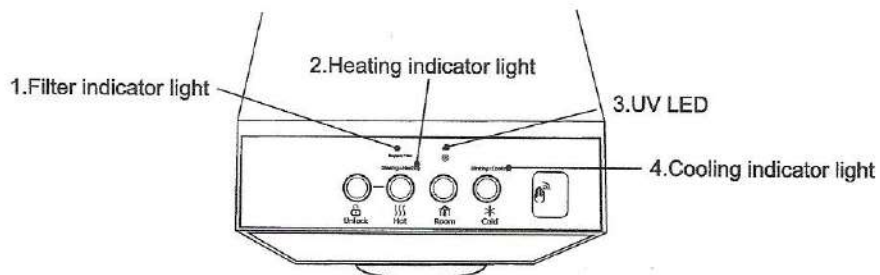
This machine should not be plugged back in until 3 minutes after it has been unplugged.

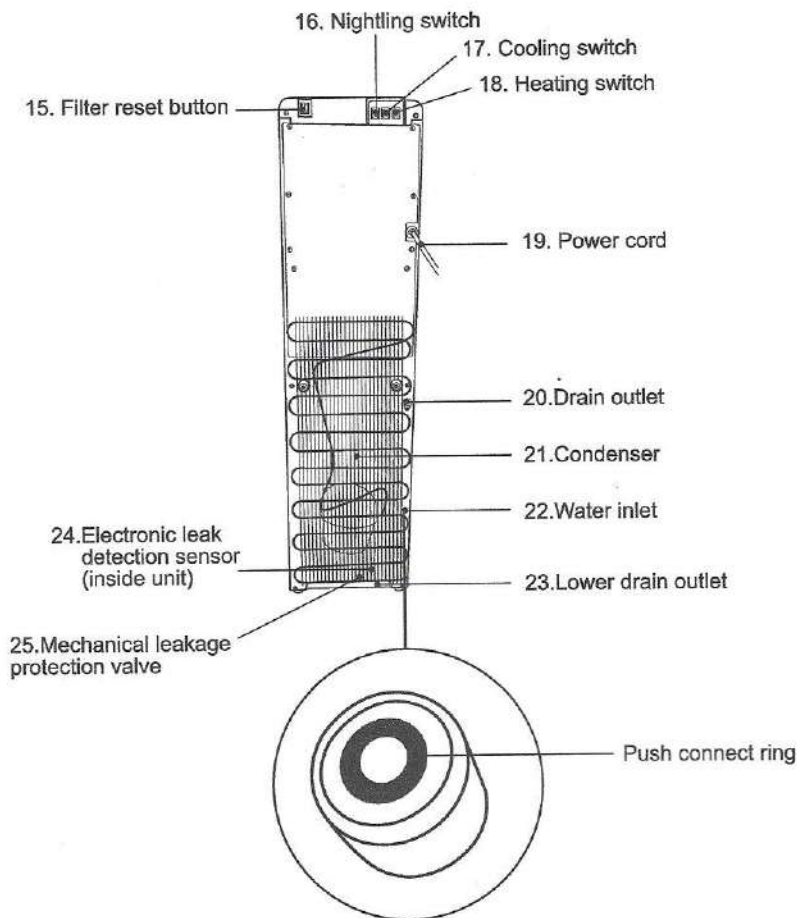
The new hose-sets supplied with the appliance are to be used and that old hose-sets should not be reused.

WARNING: Do not operate the UV-C emitter when it is removed from the appliance enclosure.

## 2. About Your Water Cooler

### Part Name of Water Purifier





## Indicator Lights

### Heating Indicator Light

This light will indicate when the water is heating. The light will blink while the water is heating and will turn off when it has reached the correct temperature of approximately 90°C.

### Cooling Indicator Light

This light will indicate when the water is cooling. The light will blink while the water is cooling and will turn off when it has reached the correct temperature of 4°C.

### Filter Indicator Light

This light will be red when the filter needs to be replaced. This light will begin to blink red as a warning that the filter will need to be changed soon. When the life of the filter is expired this indicator light will remain steady on and the unit will beep to alert you that it needs to be changed right away.

### UVLED Indicator Light

This product have an UVLED in the top of the cold water tank .It will prevent germs from breeding.

## Model and Major Parameters

Model	JL1844S-G
Rated voltage	220-240V~
Rated frequency	50/60Hz
Rated power	535W
Heating power	420W
Cooling current	1.0A
Hot water capacity	4L( $\geq 85^{\circ}\text{C}$ )
Cold water capacity	2.5L( $\leq 10^{\circ}\text{C}$ )
Applicable water	Tap water TDS $\leq 350$ ppm
Applicable environment	4-38 $^{\circ}\text{C}$ humidity $\leq 90\%$
Applicable water pressure	0.1-0.4MPa
Applicable water	Tap water
Product size	310(W)x360(D)x1040(H)mm
Packing size	358(W)x396(D)x1120(H)mm

The product is not recommended to be used at an altitude of above 1500 meter.

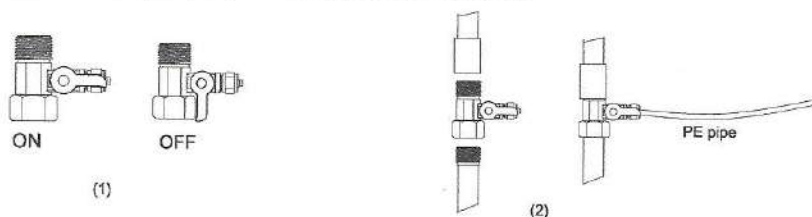
### 3. Getting Started

#### Guidance on Unpacking and Installation

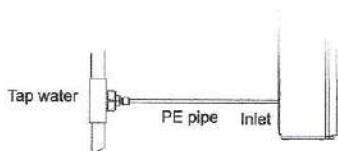
**WARNING:** Please cut off water source before replacing filters. Never plug filters in water running state.

##### 3.1 Guidance on Unpacking and Installation

1. Open the top of the packing case, take out the top foam and its accessories.
2. Put the accessories aside.
3. Unpack the product, install the water collector.
4. Take out the quick joint, and install it on the water pipe.



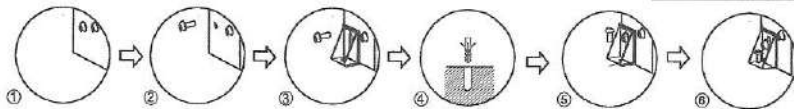
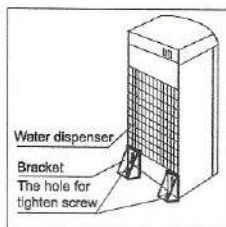
5. Take out the pin of the quick joint at the rear of the products side plate's, and then take out the white plug.



6. Insert the water inlet PE pipe in the quick joint, and tighten the pin.
7. After installing, supply power, and use it normally.
8. The water cooler plug cord into a ground fault interrupter receptacle.
9. When installing filter and replace filter please turn off the water and power supply before installation and replacement.

#### Machine Installation

- 1-2. Loosen the screw of the left or right bottom angle just as the picture shown.
3. Use the screw to fix the bracket on the left or right bottom angle of the water dispenser.
4. Make a hole on the floor's or the desk's surface where the water dispenser will be installed.
5. Fix the bracket on the floor by screw tightly.
6. Tighten the screw.



**WARNING!** To avoid a hazard due to instability of the appliance, it must be fixed in accordance with the instructions.



## Activate Heating and Cooling

Before turning on the heating (#18) or cooling (#17) switches, ensure water is already filling inside the inner tanks by dispensing a drop of water from the hot (#6) and cold (#8) push buttons. To activate the cold water, push the cooling switch (#17) into the on (I) position by pushing the top of the switch in. If you do not wish to have cold water you can leave the switch in the off (O) position.

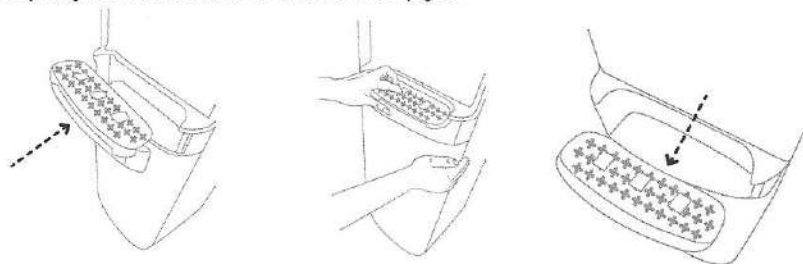
To activate the hot water, push the heating switch (#18) into the on (I) position by pushing the top of the switch in. If you do not wish to have hot water you can leave the switch in the off (O) position.

Please allow 15 minutes for the hot water to be heated. During this time the heating indicator light (#2) will blink. The light will turn off when the heating process is complete. Please allow 1 hour for the cold water to be cooled. During this time the cooling indicator light (#4) will blink. The light will be turned off (O) when the cooling process is complete.

## Installing and Removing the Drip Tray

No external drain is needed, the overflow will collect here. The red float will rise to indicate when the drip tray needs to be emptied.

1. To install the drip tray, simply slide it into the area at the top of the door until it snaps into place.
2. To remove the drip tray, place your fingers in the grid of the drip tray with one hand and hold the door of the cooler shut with the other.
3. Gently pull the drip tray toward you to release it. Once it has been released you can remove the drip tray from the door of the cooler to empty it.



## 4. User Guide and Maintenance

### Dispensing Water

#### Cold water

Once you have turned the cooling switch (#17) into the on (I) position it will take initially 1 hour for the water to cool. During this time the cooling indicator light (#4) around the cold water button will blink. During this time the compressor could run continuously. This is normal. The light will be turned off when the cooling process is complete.

1. Position a bottle, glass, pitcher or cooking pot below the water spout (#11).
2. Press the cold water button (#8) to begin the flow of water. You must continue to press the cold water button in order for the water to continue to flow. While water is dispensing, the button will light up blue.
3. Once the desired fill level is achieved, release the cold water button (#8) to stop the flow of water.

#### Room Temperature Water

1. Position the bottle, glass, pitcher or cooking pot below the water spout (#11).
2. Press the room temperature water button (#7) to begin the flow of water. You must continue to press the cold water button in order for the water to continue to flow. While water is dispensing, the button will light up orange.
3. Once the desired fill level is achieved release the room temperature push button (#7) to stop the flow of water.

#### Hot water

Once you have turned the heating switch (#18) into the on (I) position it will take initially 15 – 20 minutes for the water to heat up. During this time the heating indicator light (#2) above the hot water icon will be steady. The light will be turned off when the heating process is complete.

1. Position a bottle, glass, pitcher or cooking pot below the water spout (#11).
2. Press the child safety lock push button (#5) and press the hot water button (#6) to begin the flow of water. You must continue to press the hot water button in order for the water to continue to flow. While water is dispensing, the button will light up red.
3. Once the desired fill level is achieved release the hot water push button (#6) to stop the flow of water.

### Touchless control function

Place the hand 2 inches over the sensor to dispense cold water. When you take your hand away from the sensor, the water stops. The continuous water dispensing time is up to 30 seconds by default setting when you keep your hand over the sensor.

#### Setting mode:

Press the child lock button and hot water button together for 3s, the child lock button and cold water button light flash. The machine enters setting mode. You can reset the continuous dispensing time by putting your hand over the sensor within 10 seconds. The machine starts dispensing cold water till you take your hand away or 40 seconds. The machine will remember this timing as continuous dispensing time.

If you don't take any action in 10 seconds after the machine enters setting mode, the child lock button and cold water button light flash will stop flashing and the touchless control function is inactivated.

To activate the touchless control function, you need to enter the setting mode again and set the continuous dispensing time. Power off the machine will resume to default setting.



## 5.Cleaning

### Rinsing, Cleaning, and Draining

To prolong the lifetime of the machine, it is recommended that the unit be cleaned and sanitized manually about every six months.

To clean the outside of the unit

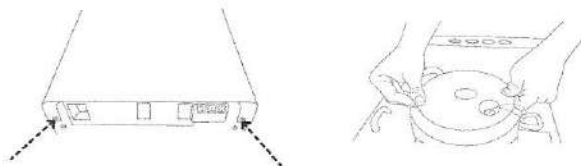
Use a disinfectant of your choice to wipe down the outside of the machine. Disinfectant does not come with this unit. It can be purchased separately from a local store.

To rinse the inside of the unit

The machine has been disinfected prior to departing from the factory. However, it is recommended to rinse and drain the unit prior to installation.

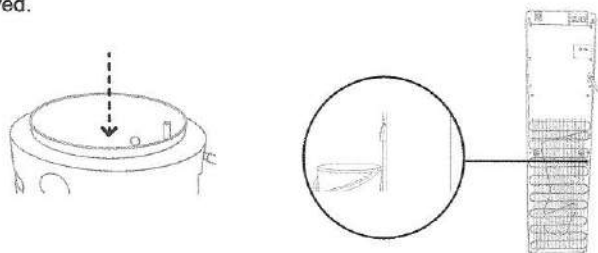
1. Before cleaning, make sure that the cooling switch (#17) and heating switch (#18) are in the off (O) position and unplug the machine.

2. Remove the two screws located on the back (at the top, in line with the switches) of the cooler. Remove the top cover by lifting at an angle and pull off. Remove the white cold water tank cover and the separator.



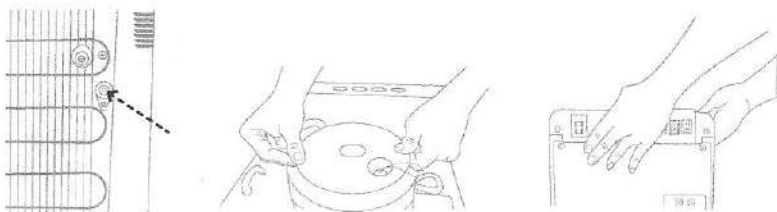
3. Pour 0.6 gallons of clean water into the cold tank. (The cold water tank is the open cylinder that the white cover was removed from).

4. Place a large bucket beneath the drain outlet (#20) located on the back of the unit. Remove the drain cover and allow the water to drain from the unit. Water will start flowing as soon as the drain cover is removed.



**Caution:** The dispenser will heat water to a temperature of approximately 90°C. It can cause severe burns if not handled carefully. Please use caution while operating and cleaning. Please allow ample time for any hot water inside the machine to cool down before draining it.

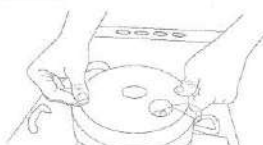
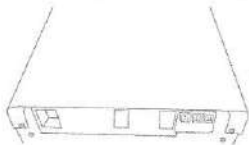
5. Once water is completely drained, reposition the drain cover, cold tank cover and the top cover. Ensure that the pipes and wires are connected properly and you may use the dispenser as normal.



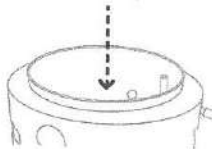
### Cleaning

To remove mineral deposits that may have built up inside the cold tank, mix 4 L of water with 200 g of citric acid crystals (not included) or cleaning solution of your choice.

1. Unscrew the top cover and lift off the cold tank lid.



2. Put the mixture into the machine's cold tank and make sure the water can flow out of the spout (#10).
3. Plug in the power cord and turn on (I) the heating switch (#18). Allow the water to heat for 15 minutes.
4. Turn off (O) the heating switch (#18) and allow the liquid mixture to cool down for 20 minutes.
5. Drain the liquid from the drain outlet (#20), then flush with water two or three times by following the rinsing instructions above. Only disassemble parts mentioned to avoid damaging the machine.



### 6. Maintenance

1. Keep this machine in a dry and cool place and avoid direct sunshine. Rearward of the machine shall be at least 20 cm away from the wall. Never put the machine on paper or foam, which may store water and then cause creepage. Never put anything flammable beside this machine. Do not use the machine outdoors or in a place that can be splashed by water.
2. For the water purifier, the installation and replacement of filters must be carried out by qualified personnel.
3. In case the machine is not in use for a long time, turn off the heating switch or the refrigerating switch to save power.
4. In case the machine is not needed for a long time, please take off the plug, turn off the copper chrome-plated ball valve and drain off the remaining water through the outlet. For another use, discharge water for 3-5min. In the event that the machine is blocked by ice due to the environment below ice point, keep the refrigerating switch closed for 4 hours and then turn it on to continue the operation.
5. In case the water supply is cut off, please close the feed water ball valve and cut off the power, after water re-supply, please open the other faucets to discharge sediment and then turn on the feed water ball valve.
6. The machine must use an earthed three-pin socket and a reliable creepage protection switch.
7. Never use organic solvents such as gasoline to clean the machine: strictly prohibit washing the machine with water or splashing water to the machine.
8. Never turn on (off) the machine by inserting the plug into (pulling the plug out from) the socket. Never increase the length of the supply cord to avoid fire.
9. If the supply cord is damaged, it must be replaced by the manufacturer or qualified person so as to avoid a hazard.
10. The water source for the water purifier is civil tap water.
11. Never dismantle spare parts of the machine to avoid water leakage or damage.
12. Never turn the machine upside down or lean it more than 45° when moving it so as to avoid any damage to it or any accident.
13. Limited warranty: electrical components and water system are warranted for 12 months from date of purchasing.

## 7.Troubleshooting

Failure	Cause	Solution
Small water flow	Low water pressure	Check the booster pump or water inlet
Unsuitable water temperature	Power supply not put through	Please switch on power supply
	Over consumption of water in a short time	Just wait a moment, and water is available again
	Corresponding functions not started	Press a corresponding function key to start the function
Water leakage	Pipe not connected properly	Inspect the connector to connect the pipe properly
	Water pipe and PE pipe bursting	Replace the water pipe and PE pipe
4 lights are flashing	There should be leakage	Check the PCB on the base plate. Repair the machine and dry the PCB, and then power on again.
Electric leakage	Machine in poor contact with ground	Use a three-pin socket with earth wire, making the machine grounded properly
Noisy operation	Not installed steadily	Place the machine on a steady & solid surface
Machine fails to run	Power supply not put through	Switch on power supply

It is a normal state that the following circumstances occur when the water purifier is used.

1. During the heating, the heating tube may generate slight noises. This is a normal state.
2. When the heating tank is being heated without water, the anti dry-burning device will disconnect automatically and can not reset by its own. The reset must be completed by a professional technician. The design is in accordance with the national safety requirements.
3. When an ambient temperature is higher, the cooling capacity may be slower, which is a normal state.

The packaging material used is recyclable; we recommend that you separate plastic, paper and cardboard and give them to recycling companies. To help preserve the environment, the refrigerant used in this product is R134a (Hydrofluorocarbon -HFC), which does not affect the ozone layer and has little impact on the greenhouse effect. According to WEEE (Waste of Electrical and Electronic Equipment) guidelines, waste from electrical and electronic devices should be collected separately. If you need to dispose of this appliance in the future, do NOT throw it away with the rest of your domestic garbage. Instead, please take the appliance to the nearest WEEE collection point, where available.



The product is subject to change without notice.  
Please keep this manual properly.

**Foshan Midea Chungho Water purification  
Equipment Co., Ltd**

No.68 GuangLe Road, BEIJIAO, SHUNDE, FOSHAN,  
GUANGDONG, R.P.CHINA